

# Historical Map

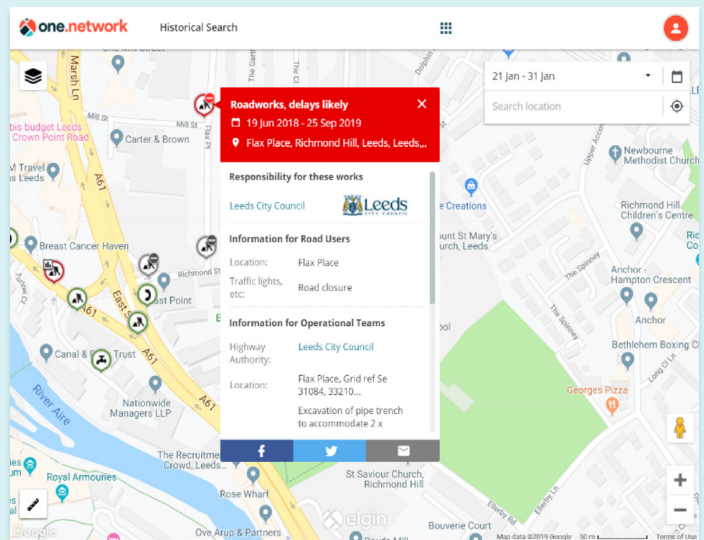
Comprehensive information about historical roadworks, events, and traffic management, searchable over the past 7 years.

## A complete, searchable archive of road disruptions

Information about past roadworks and traffic management interventions is accessible via one.network's Historical Map. Users can call up details about any street, going back 7+ years – or they can visualise works across a whole region, over weeks or months.

Want a custom demo?

Get in touch



Availability of non-roadworks data via the Historical Map is dependent on use of Traffic Management Module in any given area.

## Revolutionise your reputation management



### Resolve

Resolve liability claims relating to past roadworks, satisfying your obligations and evidencing your position



### Retrieve

Retrieve information to support reinstatement failure claims, revealing exactly what happened where on the network



### Analyse

Analyse historical works and traffic management schemes to guide your future works planning

Share your road events to every platform from a single interface

- Resolve customer service tickets faster by investigating previous incidents on-demand, reducing inbound enquiries and saving your team's time
- Establish total visibility of your works, going back over 7 years
- Evidence time, location, and category of works anywhere on the map